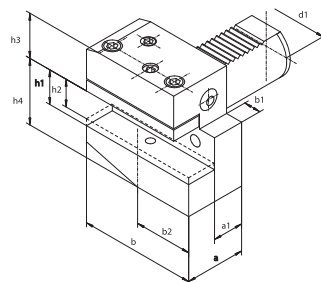


1114P

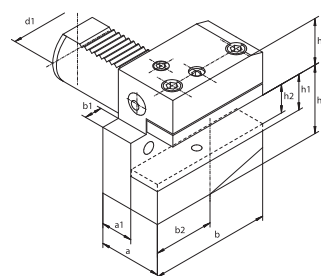
- Оправки поперечные
- Державки радиальные



| Nr produktu | Typ | DIN 69880 | d1 | a | a1 | b | b1 | b2 | h1 | h2 | h3 | h4 |
|--------------|------------|-----------------|----|----|----|-----|------|------|----|----|------|----|
| Код продукта | Тип | | | | | | | | | | | |
| 341114001200 | 1114-16P | B1-16 x 12 x 24 | 16 | 24 | 13 | 42 | 5,0 | 23,0 | 12 | 10 | 20,0 | 22 |
| 341114004000 | 1114-16P-L | B1-16 x 12 x 34 | 16 | 34 | 23 | 42 | 5,0 | 23,0 | 12 | 10 | 20,0 | 22 |
| 341114003800 | 1114-20P | B1-20 x 16 x 30 | 20 | 30 | 16 | 55 | 7,0 | 30,0 | 16 | 12 | 25,0 | 30 |
| 341114006600 | 1114-20P-L | B1-20 x 16 x 40 | 20 | 40 | 26 | 55 | 7,0 | 30,0 | 16 | 12 | 25,0 | 30 |
| 341114008100 | 1114-25P | B1-25 x 16 x 30 | 25 | 30 | 16 | 55 | 7,0 | 30,0 | 16 | 12 | 25,0 | 30 |
| 341114009400 | 1114-25P-L | B1-25 x 16 x 40 | 25 | 40 | 26 | 55 | 7,0 | 30,0 | 16 | 12 | 25,0 | 30 |
| 341114005300 | 1114-30P | B1-30 x 20 x 40 | 30 | 40 | 22 | 70 | 10,0 | 35,0 | 20 | 16 | 28,0 | 38 |
| 341114007900 | 1114-30P-L | B1-30 x 20 x 60 | 30 | 60 | 42 | 70 | 10,0 | 35,0 | 20 | 16 | 28,0 | 38 |
| 341114010100 | 1114-40P | B1-40 x 25 x 44 | 40 | 44 | 22 | 85 | 12,5 | 42,5 | 25 | 20 | 32,5 | 48 |
| 341114020300 | 1114-50P | B1-50 x 32 x 55 | 50 | 55 | 30 | 100 | 16,0 | 50,0 | 32 | 25 | 35,0 | 60 |

1114L

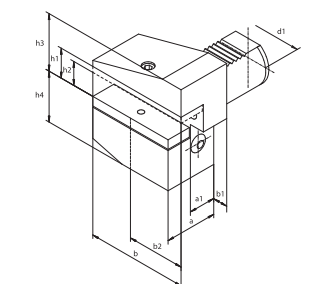
- Оправки поперечные
- Державки радиальные



| Nr produktu | Typ | DIN 69880 | d1 | a | a1 | b | b1 | b2 | h1 | h2 | h3 | h4 |
|--------------|------------|-----------------|----|----|----|-----|------|------|----|----|------|----|
| Код продукта | Тип | | | | | | | | | | | |
| 341114100000 | 1114-16L | B2-16 x 12 x 24 | 16 | 24 | 13 | 42 | 5,0 | 23,0 | 12 | 10 | 20,0 | 22 |
| 341114101300 | 1114-16L-L | B2-16 x 12 x 34 | 16 | 34 | 23 | 42 | 5,0 | 23,0 | 12 | 10 | 20,0 | 22 |
| 341114110200 | 1114-20L | B2-20 x 16 x 30 | 20 | 30 | 16 | 55 | 7,0 | 30,0 | 16 | 12 | 25,0 | 30 |
| 341114111500 | 1114-20L-L | B2-20 x 16 x 40 | 20 | 40 | 26 | 55 | 7,0 | 30,0 | 16 | 12 | 25,0 | 30 |
| 341114112800 | 1114-25L | B2-25 x 16 x 30 | 25 | 30 | 16 | 55 | 7,0 | 30,0 | 16 | 12 | 25,0 | 30 |
| 341114113000 | 1114-25L-L | B2-25 x 16 x 40 | 25 | 40 | 26 | 55 | 7,0 | 30,0 | 16 | 12 | 25,0 | 30 |
| 341114120400 | 1114-30L | B2-30 x 20 x 40 | 30 | 40 | 22 | 70 | 10,0 | 35,0 | 20 | 16 | 28,0 | 38 |
| 341114122000 | 1114-30L-L | B2-30 x 20 x 60 | 30 | 60 | 42 | 70 | 10,0 | 35,0 | 20 | 16 | 28,0 | 38 |
| 341114130600 | 1114-40L | B2-40 x 25 x 44 | 40 | 44 | 22 | 85 | 12,5 | 42,5 | 25 | 20 | 32,5 | 48 |
| 341114140800 | 1114-50L | B2-50 x 32 x 55 | 50 | 55 | 30 | 100 | 16,0 | 50,0 | 32 | 25 | 35,0 | 60 |

1115P

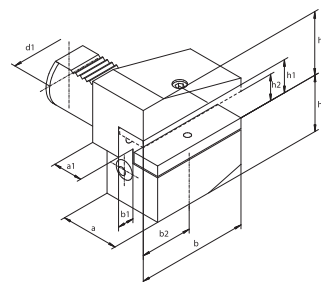
- Оправки поперечные одвóрóные
- Державки радиальные обратные



| Nr produktu | Typ | DIN 69880 | d1 | a | a1 | b | b1 | b2 | h1 | h2 | h3 | h4 |
|--------------|------------|-----------------|----|----|----|-----|------|------|----|----|----|------|
| Код продукта | Тип | | | | | | | | | | | |
| 341115001000 | 1115-16P | B3-16 x 12 x 24 | 16 | 24 | 13 | 42 | 5,0 | 23,0 | 12 | 10 | 22 | 20,0 |
| 341115004900 | 1115-16P-L | B3-16 x 12 x 34 | 16 | 34 | 23 | 42 | 5,0 | 23,0 | 12 | 10 | 22 | 20,0 |
| 341115003600 | 1115-20P | B3-20 x 16 x 30 | 20 | 30 | 16 | 55 | 7,0 | 30,0 | 16 | 12 | 30 | 25,0 |
| 341115006400 | 1115-20P-L | B3-20 x 16 x 40 | 20 | 40 | 26 | 55 | 7,0 | 30,0 | 16 | 12 | 30 | 25,0 |
| 341115008000 | 1115-25P | B3-25 x 16 x 30 | 25 | 30 | 16 | 55 | 7,0 | 30,0 | 16 | 12 | 30 | 25,0 |
| 341115009200 | 1115-25P-L | B3-25 x 16 x 40 | 25 | 40 | 26 | 55 | 7,0 | 30,0 | 16 | 12 | 30 | 25,0 |
| 341115005100 | 1115-30P | B3-30 x 20 x 40 | 30 | 40 | 22 | 70 | 10,0 | 35,0 | 20 | 16 | 38 | 35,0 |
| 341115007700 | 1115-30P-L | B3-30 x 20 x 60 | 30 | 60 | 42 | 70 | 10,0 | 35,0 | 20 | 16 | 38 | 35,0 |
| 341115010000 | 1115-40P | B3-40 x 25 x 44 | 40 | 44 | 22 | 85 | 12,5 | 42,5 | 25 | 20 | 48 | 42,5 |
| 341115020100 | 1115-50P | B3-50 x 32 x 55 | 50 | 55 | 30 | 100 | 16,0 | 50,0 | 32 | 25 | 60 | 50,0 |

1115L

- Оправки поперечные одвóрóные
- Державки радиальные обратные



| Nr produktu | Typ | DIN 69880 | d1 | a | a1 | b | b1 | b4 | h1 | h2 | h3 | h4 |
|--------------|------------|-----------------|----|----|----|-----|------|------|----|----|----|------|
| Код продукта | Тип | | | | | | | | | | | |
| 341115103700 | 1115-16L | B4-16 x 12 x 24 | 16 | 24 | 13 | 42 | 5,0 | 23,0 | 12 | 10 | 22 | 20,0 |
| 341115104000 | 1115-16L-L | B4-16 x 12 x 34 | 16 | 34 | 23 | 42 | 5,0 | 23,0 | 12 | 10 | 22 | 20,0 |
| 341115105200 | 1115-20L | B4-20 x 16 x 30 | 20 | 30 | 16 | 55 | 7,0 | 30,0 | 16 | 12 | 30 | 25,0 |
| 341115106500 | 1115-20L-L | B4-20 x 16 x 40 | 20 | 40 | 26 | 55 | 7,0 | 30,0 | 16 | 12 | 30 | 25,0 |
| 341115107800 | 1115-25L | B4-25 x 16 x 30 | 25 | 30 | 16 | 55 | 7,0 | 30,0 | 16 | 12 | 30 | 25,0 |
| 341115108000 | 1115-25L-L | B4-25 x 16 x 40 | 25 | 40 | 26 | 55 | 7,0 | 30,0 | 16 | 12 | 30 | 25,0 |
| 341115110000 | 1115-30L | B4-30 x 20 x 40 | 30 | 40 | 22 | 70 | 10,0 | 35,0 | 20 | 16 | 38 | 35,0 |
| 341115112600 | 1115-30L-L | B4-30 x 20 x 60 | 30 | 60 | 42 | 70 | 10,0 | 35,0 | 20 | 16 | 38 | 35,0 |
| 341115120200 | 1115-40L | B4-40 x 25 x 44 | 40 | 44 | 22 | 85 | 12,5 | 42,5 | 25 | 20 | 48 | 42,5 |
| 341115130400 | 1115-50L | B4-50 x 32 x 55 | 50 | 55 | 30 | 100 | 16,0 | 50,0 | 32 | 24 | 60 | 50,0 |