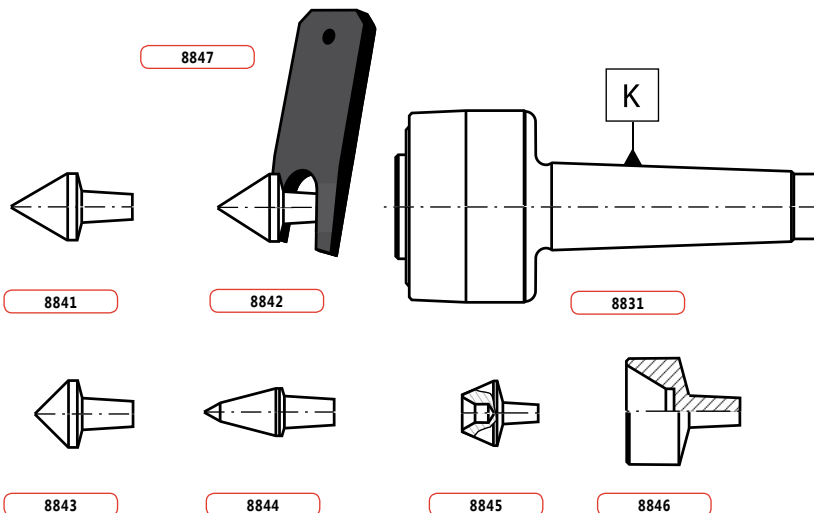


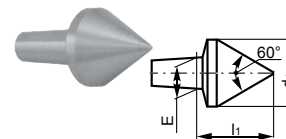
8831-KPL

- Kły tokarskie obrotowe z wymiennymi końcówkami - zestaw w plastikowej kasie
- Центры токарные вращающиеся со сменными наконечниками - комплект в пластмассовой коробке



| K SM | Max. waga | obr./min. | Max. bicie | Nr produktu | Max. bicie | Nr produktu |
|------|-----------|-----------|---------------------------|-------------|---------------------------|-------------|
| | | | Max. биение | | Код продукта | |
| K KM | Макс. вес | об./мин. | Precyzyjne • Прецизионные | | Standardowe • Стандартные | |
| 2 | 70 | 5000 | 0,010 | 800002610 | 0,020 | 800002611 |
| 3 | 120 | 4000 | 0,010 | 800002612 | 0,020 | 800002613 |
| 4 | 280 | 3000 | 0,010 | 800002614 | 0,020 | 800002615 |
| 5 | 650 | 2500 | 0,015 | 800002616 | 0,030 | 800002617 |
| 6 | 1200 | 2000 | 0,015 | 800002618 | 0,030 | 800002619 |

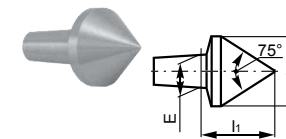
8841



| Nr produktu | W* | d ₁ | E | l ₁ |
|-------------|----|----------------|----|----------------|
| 800002660 | 2 | 18 | 7 | 21,0 |
| 800002661 | 3 | 25 | 12 | 28,0 |
| 800002662 | 4 | 28 | 15 | 30,5 |
| 800002663 | 5 | 40 | 22 | 42,5 |
| 800002664 | 6 | 60 | 28 | 61,5 |

*Wielkość • Размер

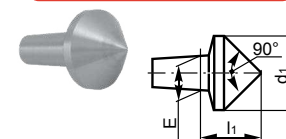
8842



| Nr produktu | W* | d ₁ | E | l ₁ |
|-------------|----|----------------|----|----------------|
| 800002665 | 2 | 18 | 7 | 17,5 |
| 800002666 | 3 | 25 | 12 | 23,0 |
| 800002667 | 4 | 28 | 15 | 25,0 |
| 800002668 | 5 | 40 | 22 | 34,0 |
| 800002669 | 6 | 60 | 28 | 50,5 |

*Wielkość • Размер

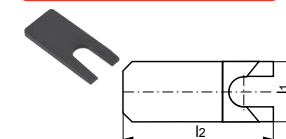
8843



| Nr produktu | W* | d ₁ | E | l ₁ |
|-------------|----|----------------|----|----------------|
| 800002670 | 2 | 18 | 7 | 15,0 |
| 800002671 | 3 | 25 | 12 | 19,0 |
| 800002672 | 4 | 28 | 15 | 21,0 |
| 800002673 | 5 | 40 | 22 | 28,0 |
| 800002674 | 6 | 60 | 28 | 40,0 |

*Wielkość • Размер

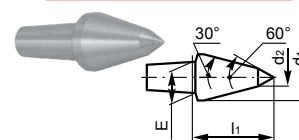
8847



| Nr produktu | W* | l ₁ | l ₂ |
|-------------|----|----------------|----------------|
| 800002909 | 2 | 20 | 50 |
| 800002910 | 3 | 30 | 70 |
| 800002911 | 4 | 45 | 100 |
| 800002912 | 5 | 55 | 120 |
| 800002913 | 6 | 65 | 160 |

*Wielkość • Размер

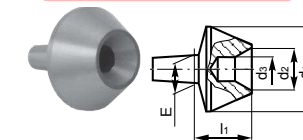
8844



| Nr produktu | W* | d ₁ | d ₂ | E | l ₁ |
|-------------|----|----------------|----------------|----|----------------|
| 800002675 | 2 | 15 | 6 | 7 | 27,0 |
| 800002676 | 3 | 18 | 8 | 12 | 31,0 |
| 800002677 | 4 | 25 | 12 | 15 | 40,5 |
| 800002678 | 5 | 28 | 13 | 22 | 45,5 |
| 800002679 | 6 | 40 | 18 | 28 | 63,5 |

*Wielkość • Размер

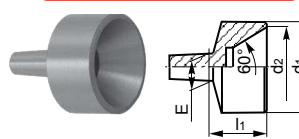
8845



| Nr produktu | W* | d ₁ | d ₂ | d ₃ | E | l ₁ |
|-------------|----|----------------|----------------|----------------|----|----------------|
| 800002680 | 2 | 28 | 12 | 6 | 7 | 18,5 |
| 800002681 | 3 | 40 | 19 | 10 | 12 | 24,0 |
| 800002682 | 4 | 55 | 22 | 10 | 15 | 36,5 |
| 800002683 | 5 | 70 | 32 | 10 | 22 | 42,0 |
| 800002684 | 6 | 100 | 50 | 15 | 28 | 56,0 |

*Wielkość • Размер

8846



| Nr produktu | W* | d ₁ | d ₂ | E | l ₁ |
|-------------|----|----------------|----------------|----|----------------|
| 800002904 | 2 | 28 | 24 | 7 | 21,5 |
| 800002905 | 3 | 40 | 35 | 12 | 26,5 |
| 800002906 | 4 | 55 | 48 | 15 | 39,0 |
| 800002907 | 5 | 70 | 63 | 22 | 47,0 |
| 800002908 | 6 | 100 | 90 | 28 | 62,0 |

*Wielkość • Размер